

IMAGE
HENRY

AS

COMMUNICATION
SEDA

R

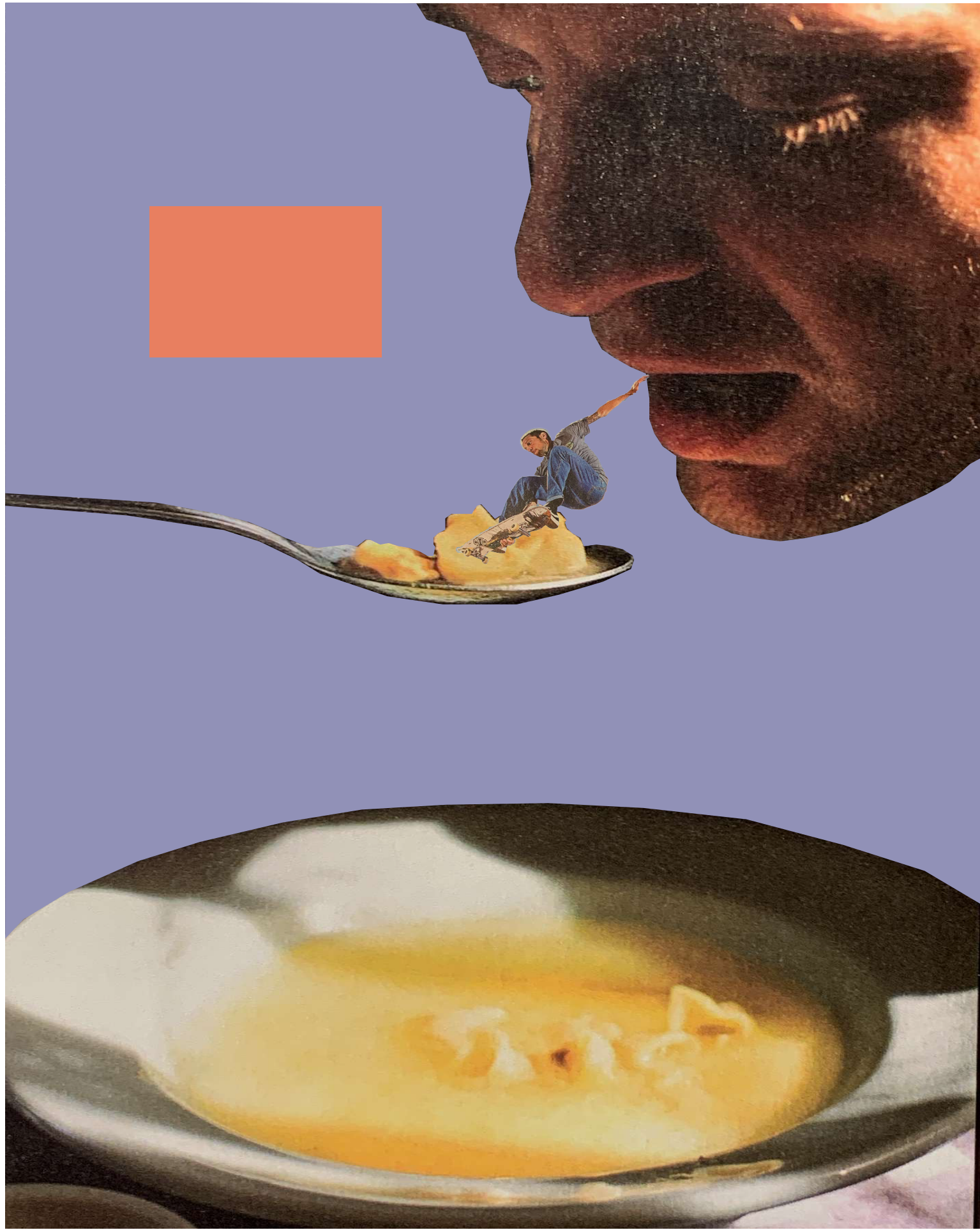
E

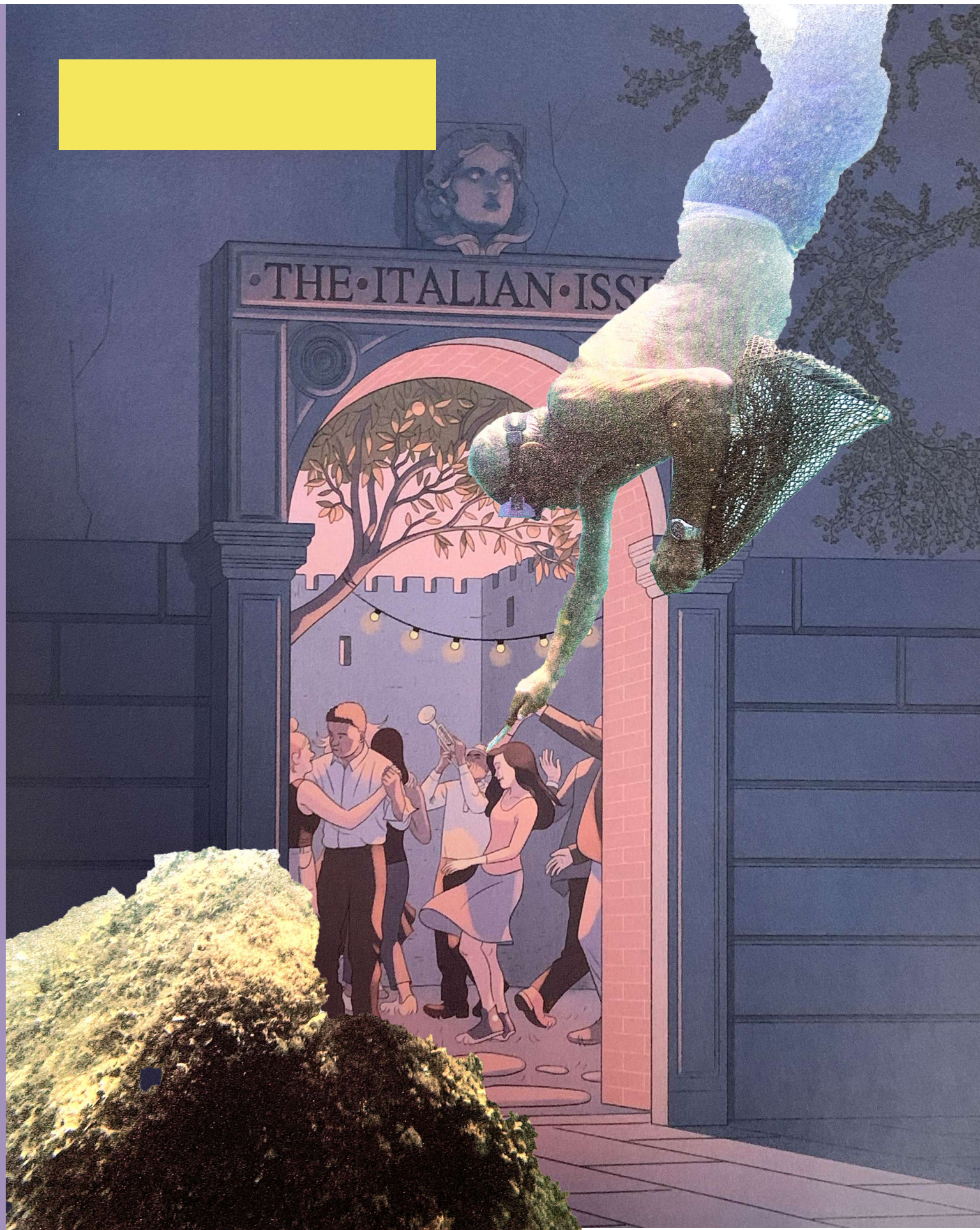
M

I

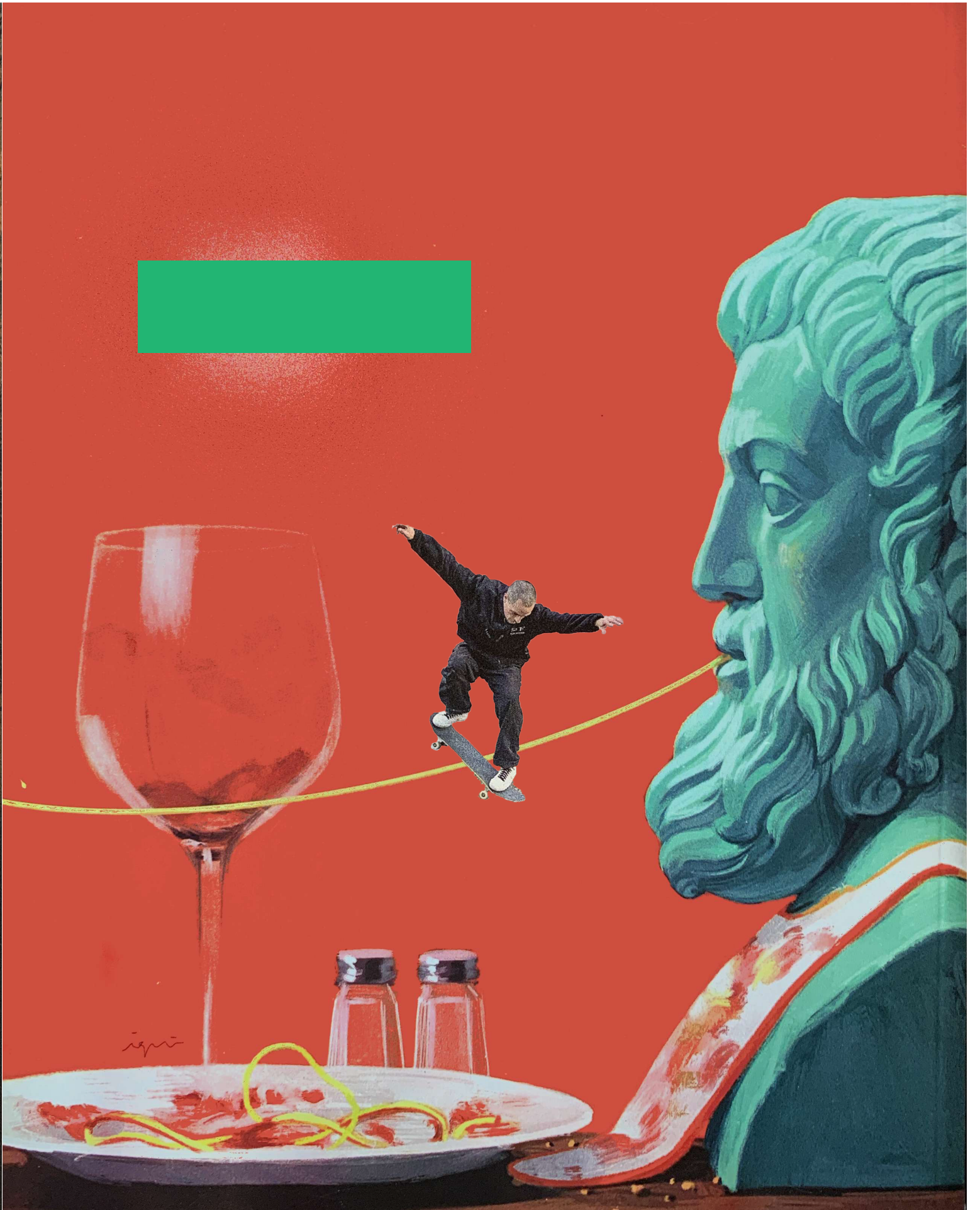
X











A photograph of a skateboarder performing a trick on a ledge. The skateboarder is wearing a dark hoodie and light-colored pants. The background shows a building with a blue door and a white wall. A large blue rectangular block is positioned in the upper-left corner of the image.

letter from

ROME

BRACE
FOR
IMPACT

BY
KEVIN
SPANKY
LONG

A black and white line drawing of a man's face, looking directly at the camera. The drawing is detailed, showing the man's hair, eyes, nose, and mouth. He is wearing a collared shirt and a tie.